



PATERO CLINIC
DIAGNOSTICS CENTER



PATERO CLINIC

PATERO CLINIC is a new center for complex diagnostics and patient consultation. The medical equipment by the leading world manufacturers available in the clinic combines modern digital technologies and unique innovative solutions, not available in Russia until now. The combination of various methods makes it possible to prepare individual complex evaluation programs and solve complicated diagnostic tasks.

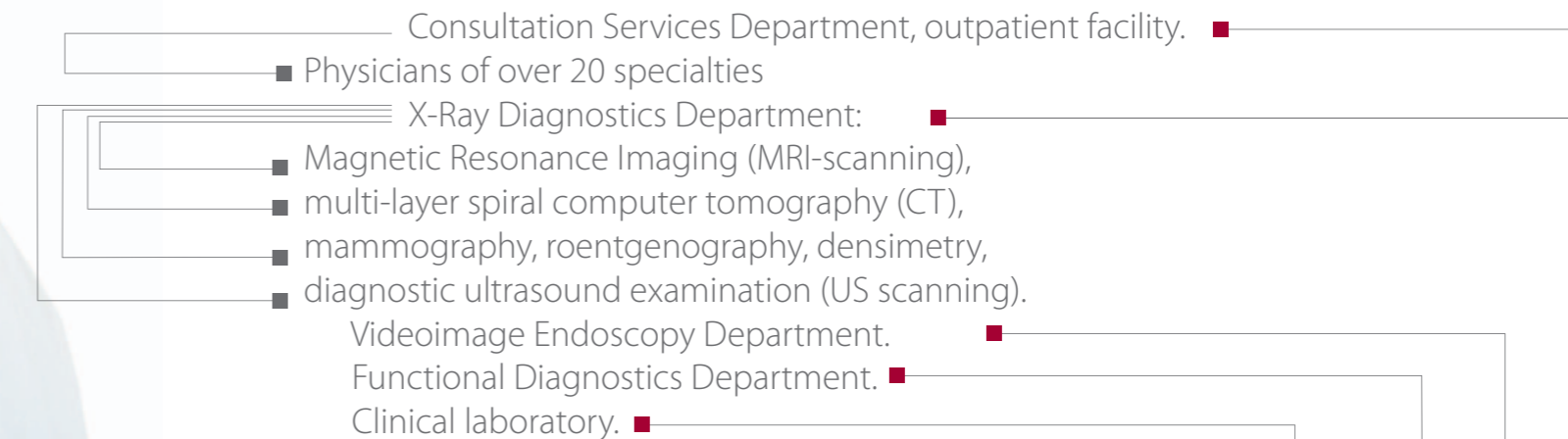
A council of specialists evaluates the obtained results to propose and develop a treatment plan.

Our doctors were professionally trained in medical schools of Europe and have experience of working at research centers of Russia. Practical workshops with participation of Russian and foreign specialists are conducted in the training center of the PATERO Clinic.

A special telecommunications system ensures constant communication with leading medical facilities of Europe, Israel and Japan providing an opportunity to discuss results with foreign colleagues in real time. If necessary, within 24 hours a "second professional opinion" may be prepared and presented by foreign specialists. Such integration makes it possible to preclude subjective errors and is unique for Russia.



STRUCTURE of the Clinic



Check-up Programs

The variety of diagnostic possibilities of the clinic makes it possible to minimize the time of examination, combine different methods, and offer complex programs in narrow medical specialties and extended examination programs.

A thorough study of patients' medical history and medical documentation makes it possible to recommend individual examination programs, to make offer corrections by extending or shortening the list of required examinations.

The results of examinations are discussed with the specialists of the PATERO Clinic, leading doctors of medical centers of Russia, Europe, Japan, USA and Israel; the outpatient treatment is performed. If necessary, specialized hospital treatment in dedicated clinics of Russia and abroad is recommended. Further patient observation is performed in the «PATERO Clinic».

Complex program **CARDIO-RISK**

- Consultation by cardiologist
- US scanning:
thyroid gland,
abdominal organs, kidneys,
suprarenal glands,
duplex scanning of kidneys,
renal vessels
- Computer tomography of heart
- MRI-scanning of heart
- ECG and echocardiography
- Laboratory diagnostics



Complex program**FEMALE HEALTH**

- Consultation of specialists:
physician, gynecologist,
breast specialist
- US scanning:
mammary glands, thyroid gland,
abdominal organs, kidneys,
suprarenal glands, small pelvis
- Mammography
- Computer tomography
of heart
- Full-body MRI-scanning
"The whole body"
- Laboratory tests,
tumor markers

Complex program**MALE HEALTH**

- Consultation by specialists
physician, cardiologist,
urologist-andrologist
- US scanning:
thyroid gland, abdominal
organs, kidneys, suprarenal glands,
small pelvis
- Echocardiography
- Computer tomography
of heart
- Full-body MRI-scanning
"The whole body"
- Laboratory tests, tumor markers

MRI-scanning

Magnetic Resonance Imaging



Magnetom Verio (Siemens) – 3 tesla

MRI tomograph is equipped with a full set of special coils for various organs of the human body. Besides, a full set of computer programs is used to process the images. Maximum weight of patients – up to 200 kg.

Full-body MRI-scanning (program “the whole body”)

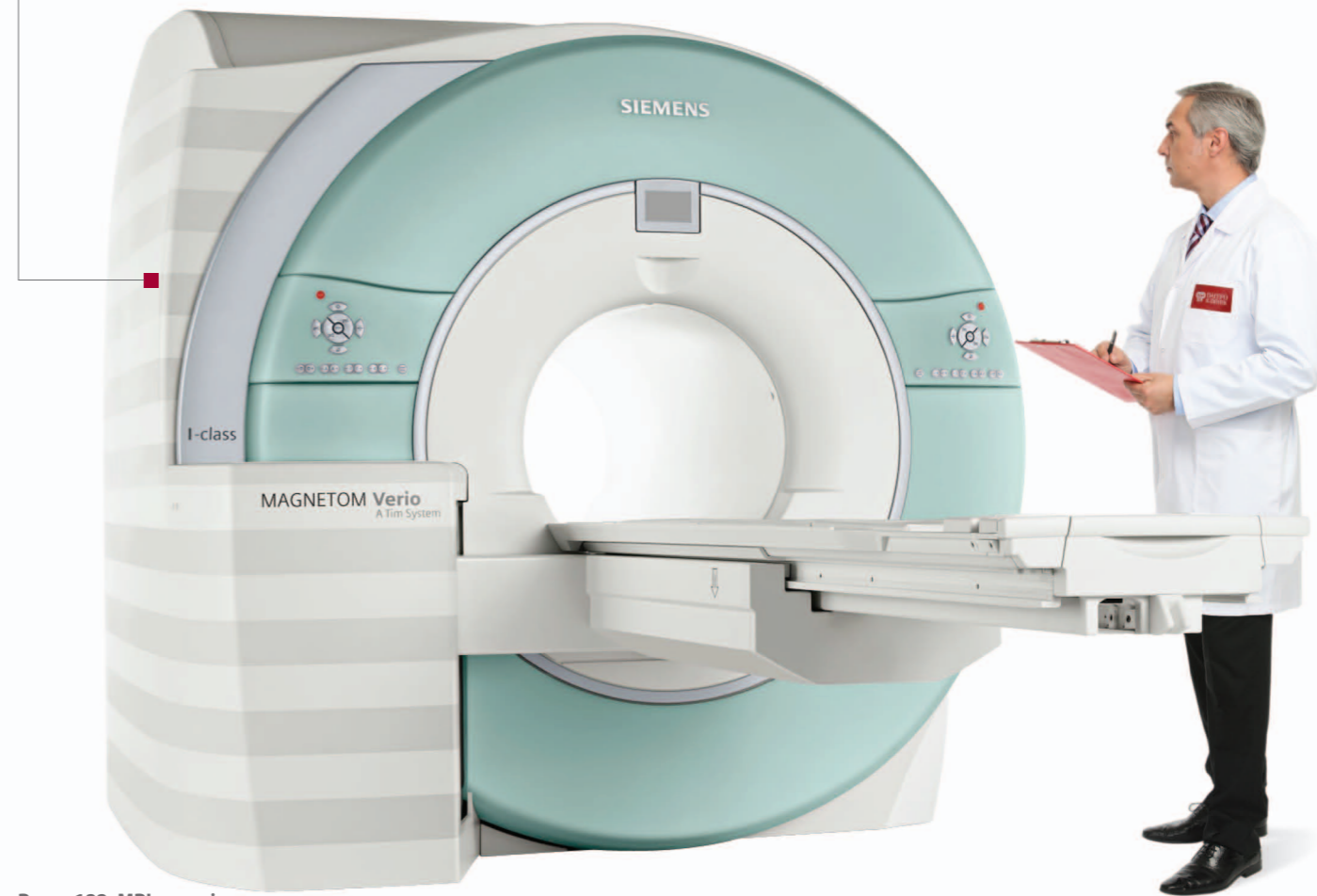
— it is an ideal method to detect changes in the lymphatic system, diseases of the locomotor apparatus, separate organs and tissues. This method allows to determine neoplasms of various localities.

MRI-scanning of heart

— it is a method that allows to evaluate important functional parameters of the ventricular contractility of a heart, especially following myocardial infarctions. There is a capability to diagnose heart valvular defects and pathology of valves.

MRI-scanning of the mammary gland

with the use of special protocol together with mammography and ultrasound examination, is a unique method of differential diagnostics of various diseases.



PATERO Clinic, Room 122, MRI-scanning

MSCT Multi-Layer Spiral Computer Tomography



Somatom Definition Flash (Siemens) with dual energy system and innovative technology – **Flash Spiral**.

There is a capability to examine patients weighing up to 200 kg.

A full body Angio-CT — a noninvasive method of diagnostics of various diseases of the vascular system, such as endoarteritis, aneurysms, congenital abnormalities and evaluation of the effectiveness of the performed surgery.

CT coronary arteriography — contemporary methods of evaluation of heart blood circulation due to atherosclerosis and when recurrent vasoconstriction of heart is suspected after surgical intervention.

Examination of volume blood flow of the brain and parenchymatous organs, determination of the chemical composition due to the differential evaluation of the density of tissues on the basis of the dual energy method.



■ PATERO Clinic, Room 125, MSCT

MAMMOGRAPHY

Screening and Differential Diagnostics



The differential diagnostics of the diseases of mammary glands is performed with the combination of digital mammography, ultra sound examination and MRI.

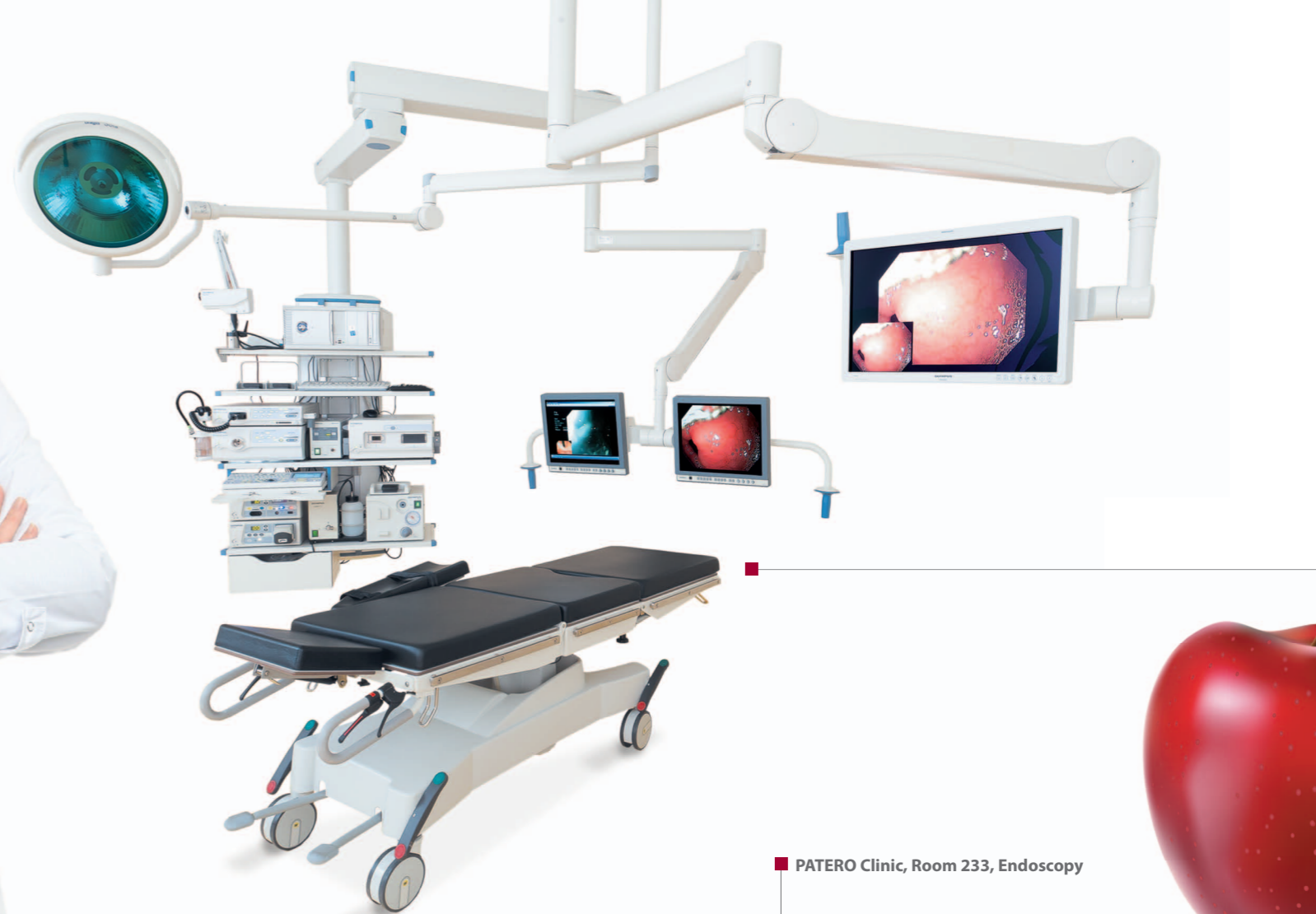
The clinic uses the unique customized full-scale digital mammography system **SELENIA Dimensions** (HOL-OGIC Inc. USA) of the latest generation with the capability of the 3-D tomosynthesis as well as a horizontal stereotax system for the biopsy of the mammary gland with dedicated digital mammography system

Lorad Multicare Platinum produced by the HOLOGIC Inc. (USA). The **Tomosynthesis** program makes it possible to obtain layered (up to 1mm) image of the mammary gland in the 3D format.



PATERO Clinic, Room 106, Mammography

VIDEOIMAGE ENDOSCOPY



■ **CV-180 Evis Exera II** – universal center of video endoscopy and endoultrasound examination, **EU-ME1** – Olympus

Wireless Capsule videoimage endoscopy – methods designed for examination of small intestine. A miniature capsule passes through the intestine and transmits a video image. Upon termination of this survey the doctor analyzes the obtained information. This procedure causes no discomfort.

Digital videoimage endoscopy – the latest generation equipment, performance of procedures without pain and/or discomfort, during sleep, by highly qualified physicians who are proficient in the modern methods of endoscopic diagnostics and treatment.

Endoscopic ultrasound examination (Endoultrasonography) – it is a combined video image endoscopy and ultrasound examination of the gastrointestinal tract that makes it possible to study the pathology in detail, to determine its size and the degree of penetration/spread, as well as to evaluate the structure and condition of the surrounding organs: pancreatic gland, gall bladder, mediastinum organs.




CLINICAL Laboratory



■ **Clinical laboratory** is one of the most important subdivisions of the PATERO CLINIC.

The laboratory is equipped with analyzers by world producers (**Abbott, Siemens, Sysmex, Roche, Carl Zeiss**). The devices are verified with the use of calibration biomaterials for the conduct of intralaboratory quality checks produced by

BioRad and Abbott. The laboratory participates in the external quality inspection check program FSEQI (Federal System of External Quality Inspection) for the whole range of examinations.

 PATERO CLINIC
Diagnostics

Clinical laboratory – over 2000 types of tests:

- General blood test
- Biochemical blood test
- Hormones
- Infections
- Immunology

- PCR diagnostics
- Microbiology
- Allergology
- Hematology



DENSIMETRY



Dual-energy X-ray osteodensitometer of the QDR, Discovery A Hologi.

Osteo densimetry — it is a method of measuring mineral density of the bone tissue in order to determine the «bone health», to evaluate the probability of bone fractures and develop further recommendations for examination and treatment. It is a method of choice in the diagnostics of osteoporosis and evaluation of the effectiveness of the selected treatment.



PATERO Clinic, Room 123, DENSIMETRY



ULTRASOUND- Diagnostics



MyLab 70 Esaote

Diagnostic ultrasound examination (US scanning) — it is an absolutely safe method of study of heart, neck blood vessels and blood vessels of lower limbs. It is one of a kind method of examination of the thyroid gland, mammary glands, abdominal cavity, small pelvis, retroperitoneal space. This method is widely used in cardiology, gastroenterology, urology, obstetrics and gynecology, in the screening and differential diagnostics of various diseases.

PATERO Clinic, Room 111, ULTRASOUND - Diagnostics



INTERNATIONAL COOPERATION



Close cooperation and exchange of experience with the leading world clinics is the absolute priority for the PATERO CLINIC.

An easy algorithm of offering medical services for patients has been developed. By using the capabilities of the telecommunication system the results of the examinations are discussed in real time mode with the specialists of the leading clinics of Europe, Israel and Japan («second professional opinion»). Upon confirmation of the diagnosis by foreign colleagues the patient may receive treatment in one of the associated partner clinics and return to the dynamic observation.

The integration into the world medical community is unique for Russia, it helps form an objective opinion, reduce the likelihood of subjective errors, minimize expenses and reduce the duration of patient treatment.

Within the framework of partner cooperation the PATERO CLINIC offers treatment in the clinics of Israel, Finland, Germany and the USA.

Israel

- Hospital Assuta
- Herzliya Medical Center
- The Chaim Sheba Medical Center

Finland

- Docrates

Germany

- Universitätsklinikum Aachen
- Universitäts Klinikum Freiburg
- Deutsches Herzzentrum Berlin

USA

- Johns Hopkins University School of Medicine.

JOINT PROJECT OF PATERO CLINIC AND HEALTHCARE BELGIUM

Healthcare Belgium — noncommercial association founded in 2007 by 11 leading clinics of Belgium. Over 200 specialists of Belgium are accessible to present a second professional opinion.

Leading partners within the framework of the Association:

- Antwerp Hospital Network ZNA
- Brussels Saint-Luc University Hospital
- University Hospitals Leuven

JOINT PROJECT OF PATERO CLINIC AND MEDICAL EXCELLENCE JAPAN

The Association unites over 30 medical institutions of Japan. PATERO CLINIC — is a partner of the Association.

Leading partner clinics:

- Southern TOHOKU Research Institute for Neuroscience
- National Cancer Center Hospital East
- International University of Health and Welfare Mita Hospital
- National Center for Global Health and Medicine Hospital

JOINT PROJECT OF PATERO CLINIC AND AMERICAN INSTITUTE OF MINIMALLY INVASIVE SPINE SURGERY (AIMIS) in Cyprus

AIMIS — is a leading center in the world for the spine surgery. It brings together the best professors and surgeons of the USA. Patients undergo examination in the PATERO CLINIC and after establishing the diagnosis, if necessary, are referred to the AIMIS clinic for surgical treatment. Further dynamic observation is performed on the basis of the PATERO CLINIC.



We are open seven days a week

from 9:00 to 21:00

Moscow, Prospect Mira, 211

on the premises of the «Zolotoy Vavilon»

Shopping and Recreation Center

www.pateroclinic.ru

info@pateroclinic.ru